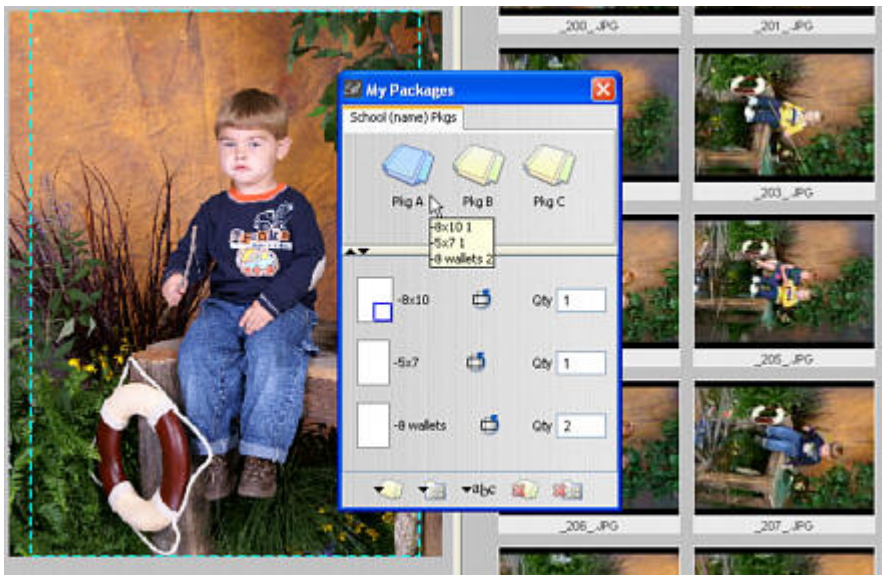


BPRocs MY PACKAGES Feature

The 'My Packages' feature is a free option that can be activated in a photographer's BPRocs system. Please notify customerservice@bullockpro.com and ask for 'My Packages' activation for your account.



'My Packages' is an extremely useful tool for photographers who sell school or sports packages of individuals. By building your packages of the standard photos sold, you can simply select the package ordered by your customer and drag the pose over to automatically create the package.

Dotted lines show the aspect ratio of the size photograph ordered.

My Packages is used by creating groups and packages in the **My Packages** palette, and dragging single node photographs from the 'For My Packages' tab in the Sizes Palette to the newly created packages.

1. Launch **BPRocs**.

2. To Open Packager, click on the Sizes button  in the main window.

3. Select '**Show My Packages**'

4. The 'My Packages' window opens ready to create and save your packages. To create a package group, click the **Add Group** button. A tooltip is available to help as you hover over each button.

5. Clicking **Add Group** will add a tab to the palette, and show a text field where the new group's name can be entered.

6. Click the **Add Package** button and type in a name for the package.

7. When the new package is first created, it will be disabled since it contains no products. To add a product to the new package, simply drag your photographs from the DigiPak/Sizes Palette/For My Pkgs onto your package icon. When a product is dragged onto a user package, the green + sign appears to signify that if it's dropped on that package, it'll become an item in that package.



8. Double click on the Pkg icon to show the components of the package. You can also change quantities for each size. (To delete a size from a pkg, enter 0 in the qty and press Enter.)

9. To remove a package, select it and click the **Remove Package** button: 

10. To remove an entire group, click the **Remove Group** button: 

11. To turn the orientation of a print within the package, simply click on the rotate icon so all prints are vertical.

12. You can choose which print and it's aspect ratio you'd like to use for crop indicators. Click on the size icon (as illustrated by the blue box on the 8x10 icon in this sample.)

13. In this case the 8x10's crop is the outside edge of the image and the 5x7 and wallet crops (aspect ratio) are indicated by the broken lines.

14. You can then move or zoom the image in the package to get the best crop on all print sizes.

15. To turn the orientation of a print within the package, simply click on the rotate icon so all prints are vertical.

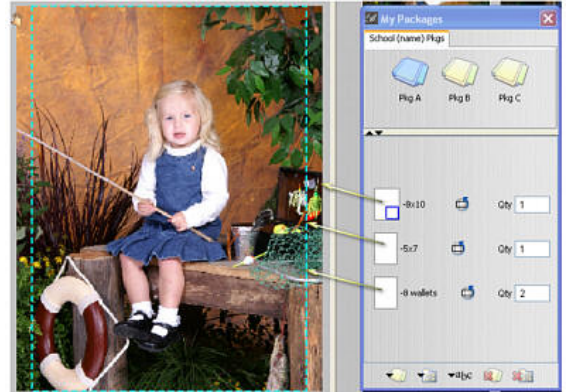
16. You can choose which print and it's aspect ratio you'd like to use for crop indicators. Click on the size icon

17. In this case the 8x10's crop is the outside edge of the image and the 5x7 and wallet crops (aspect ratio) are indicated by the broken lines.

18. You can then move or zoom the image in the package to get the best crop on all print sizes.

19. Remember, a tip or explanation about a button or icon will be displayed by hoving your mouse over it.

20. You're now ready to start dragging and dropping your images onto a package, crop (if needed) and 'Add to Order'.



Please don't hesitate to call (1.888.Bullock) or CustomerService@BullockPro.com if you need more assistance.